



# BENISI

scaling social innovation

## Building a European Network of Incubators for Social Innovation



# BENISI Objectives

EU-funded FP7 project under coordination and support actions scheme.



1. Increase the innovation capabilities of social innovators
2. Support small and locally successful social innovations to be realised across Europe
3. Provide new evidence of the role of incubators networks in accelerating and scaling up social innovations,
4. Test social incubation processes and show what works and how across Europe

**Target:** 300 social innovations

# BENISI Approach

- 36 month project [*May 2013 - April 2016*]
- Network of networks with 13 consortium partners [*7 countries*]

 **i-propeller** (lead)

 **Impact Hub network** (6 locations, 5 geo-clusters)

 **EURADA** [European Regional Authorities Development Agency]


 **DIESIS** [European Research and Development Service for Social Economy]

 **Pefondes** [European Network of the Foundations for Social Economy]

 **Cariplo Foundation**

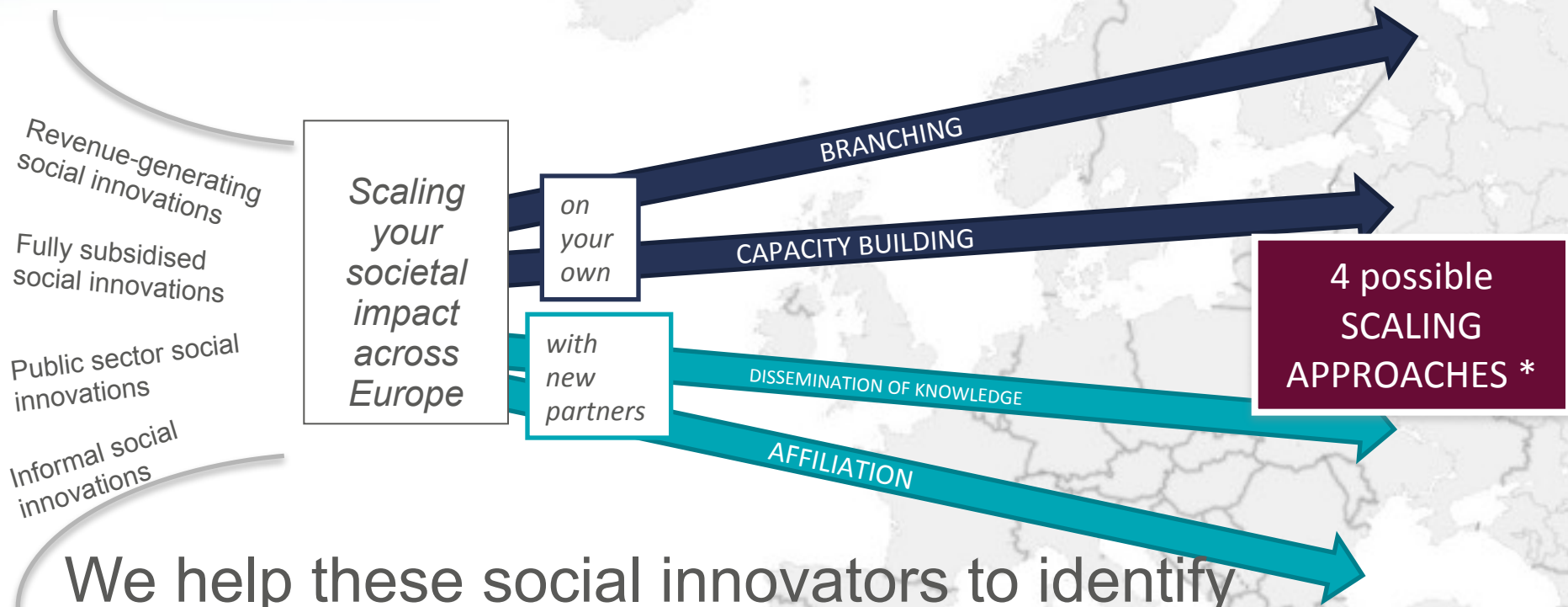
# Why do we need the BENISI network?

- Social innovators indicate access to networks and connecting to peers working in similar fields as top needed resources to scale their innovations
- Over 90% of the social innovators interviewed view partnering with others as a means of scaling their social enterprises
- Geographically, social innovators are only ready to scale in their own countries or neighboring countries - To accelerate the scaling process across Europe, a new approach is necessary

 The network enables incubators and other support organisations to benefit from common learnings and development of best practices to facilitate scaling



# Guidance in SCALING APPROACH



We help these social innovators to identify which scaling approach(es) are most suitable to grow their societal impact

\* Adapted from Prof Dr. Christiana Weber – Scaling social enterprises



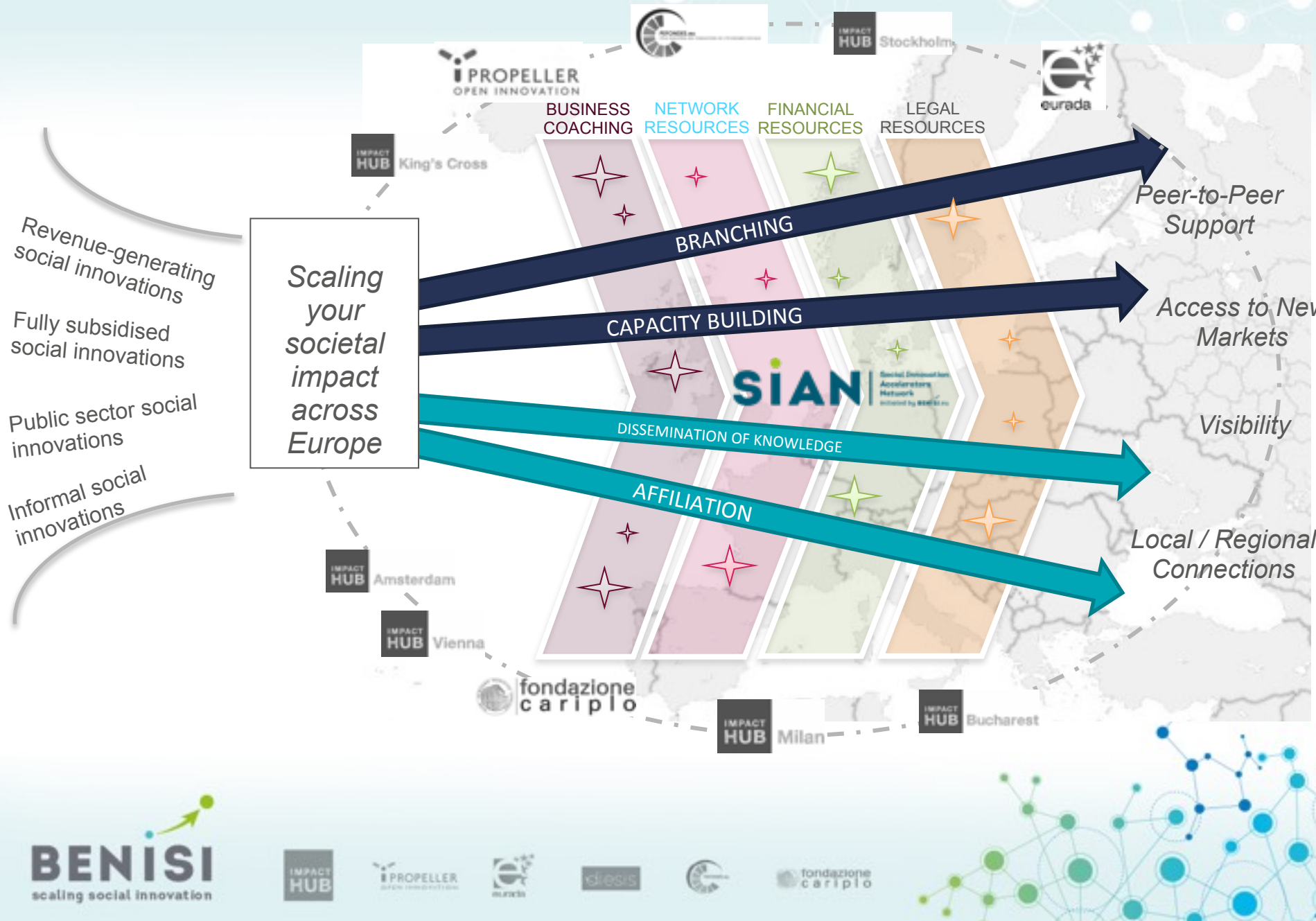
# Matching Social Innovations to Scaling Resources: Key Activities



- Providing a report of key resources and peers that can potentially support the scaling process
  - Resources matching scaling needs
  - Peer-to-peer matches working in similar fields and impact areas
- Connecting social innovators to SIAN members
- Providing business coaching to high potential social innovations



# Overview of the BENISI Network



You can get involved !

*Be part of*

**BENISI**

scaling social innovation

[www.benisi.eu](http://www.benisi.eu)